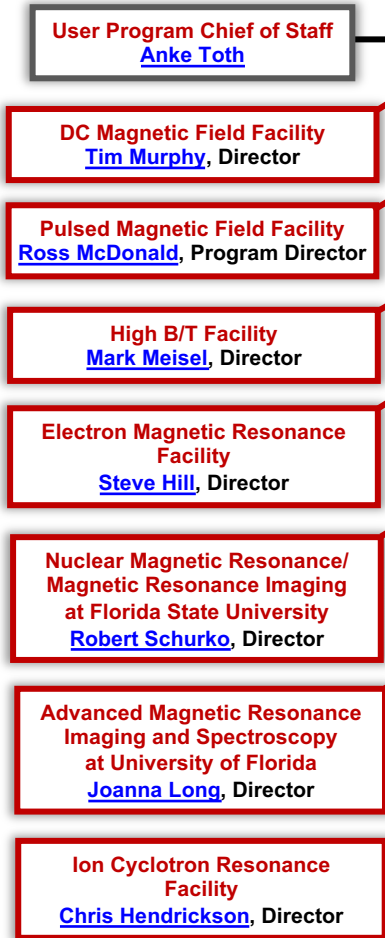
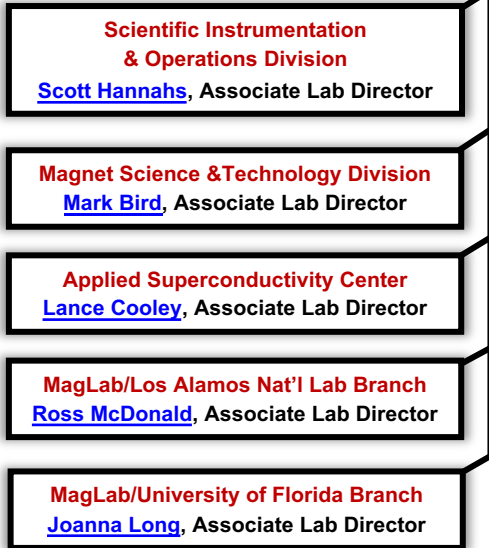


MagLab Organization

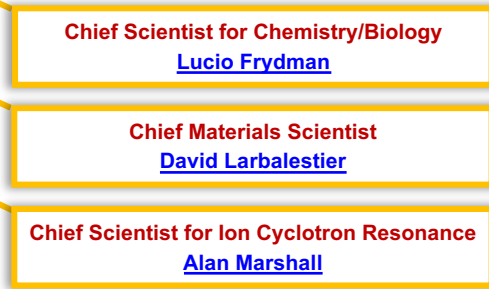
MAGLAB USER PROGRAM



ASSOCIATE LAB DIRECTORS



CHIEF SCIENTISTS



OFFICE OF THE DIRECTOR



MagLab User Program

MagLab Director and
Principal Investigator
[Greg Boebinger](#)
Deputy Lab Director
[Eric Palm](#)
Chief Scientist
[Laura Greene](#)

User Program Chief of Staff
[Anke Toth](#)

DC Magnetic
Field Facility
[Tim Murphy](#),
Director

User Scheduling
[Tim Murphy](#)

Millikelvin Lab
[Alimamy Bangura](#)

Magnetization
[Eun Sang Choi](#)

Pressure
[Stan Tozer](#)

Optics
[Steve McGill](#)

Cond Matter NMR
[Arneil Reyes](#)

Magnet Control
Room Operations
[Bryon Dalton](#)

Hybrid & Cryogenic
Operations
[Mark Vanderlaan](#)

Electronics Shop
[Julia Smith](#)

Pulsed Magnetic
Field Facility
[Ross McDonald](#),
Program Director
[Laurel Winter](#),
Deputy Director

User Scheduling
[Laurel Winter](#)

Operations
[Laurel Winter](#)

Generator
Operations
[Josiah Srock](#)

MS&T
[Doan Nguyen](#)

High B/T Facility
[Mark Meisel](#),
Director

User Scheduling
[Mark Meisel](#)

Facility Manager
[Lucia Steinke](#)

Low Temperature
NMR
[Chao Huan](#)

Electron Magnetic
Resonance
Facility
[Steve Hill](#), Director
[Jurek Krzystek](#),
Deputy Director

User Scheduling
[Jurek Krzystek](#)

Keck Powered Magnet
[Jurek Krzystek](#)

W-Band EMR
TBD

Multifrequency EMR
[Andrew Ozarowski](#)

High Field Pulsed EMR
[Hans van Tol](#)

Nuclear Magnetic
Resonance/Magnetic
Resonance Imaging
at FSU
[Robert Schurko](#), Director
[Bill Brey](#), Deputy Director

User Scheduling
[Ashley Blue](#)

Solid State and
Solution NMR
[Zhehong Gan](#)

Magnetic Resonance
Imaging
[Sam Grant](#)

NMR/MRI Probes
[Bill Brey](#)
[Peter Gor'kov](#)

Advanced Magnetic
Resonance Imaging and
Spectroscopy
at University of Florida
[Joanna Long](#), Director
[Matthew Merritt](#),
Deputy Director

Nuclear Magnetic
Resonance
[James Rocca](#)

MRI Microscopy
& Vertical Magnet
User Scheduling
[James Collins](#)

In vivo Magnetic
Resonance Imaging
& Horizontal Magnet
User Scheduling
[Huadong Zeng](#)

RF Program
[Greg Dowling](#)

Ion Cyclotron
Resonance
[Chris Hendrickson](#),
Director

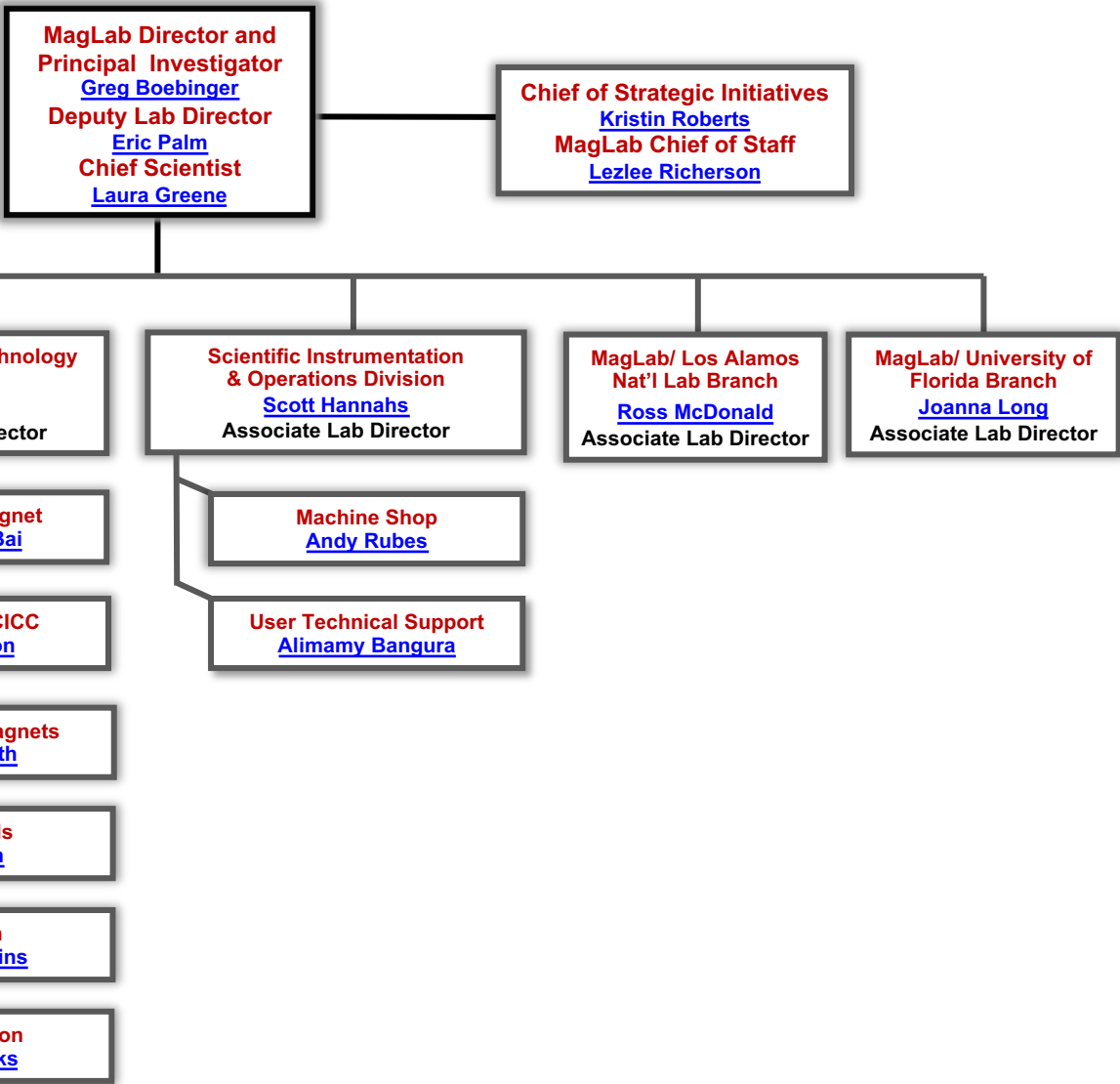
User Scheduling
[Amy McKenna](#)

Instrumentation
[Chad Weisbrod](#)

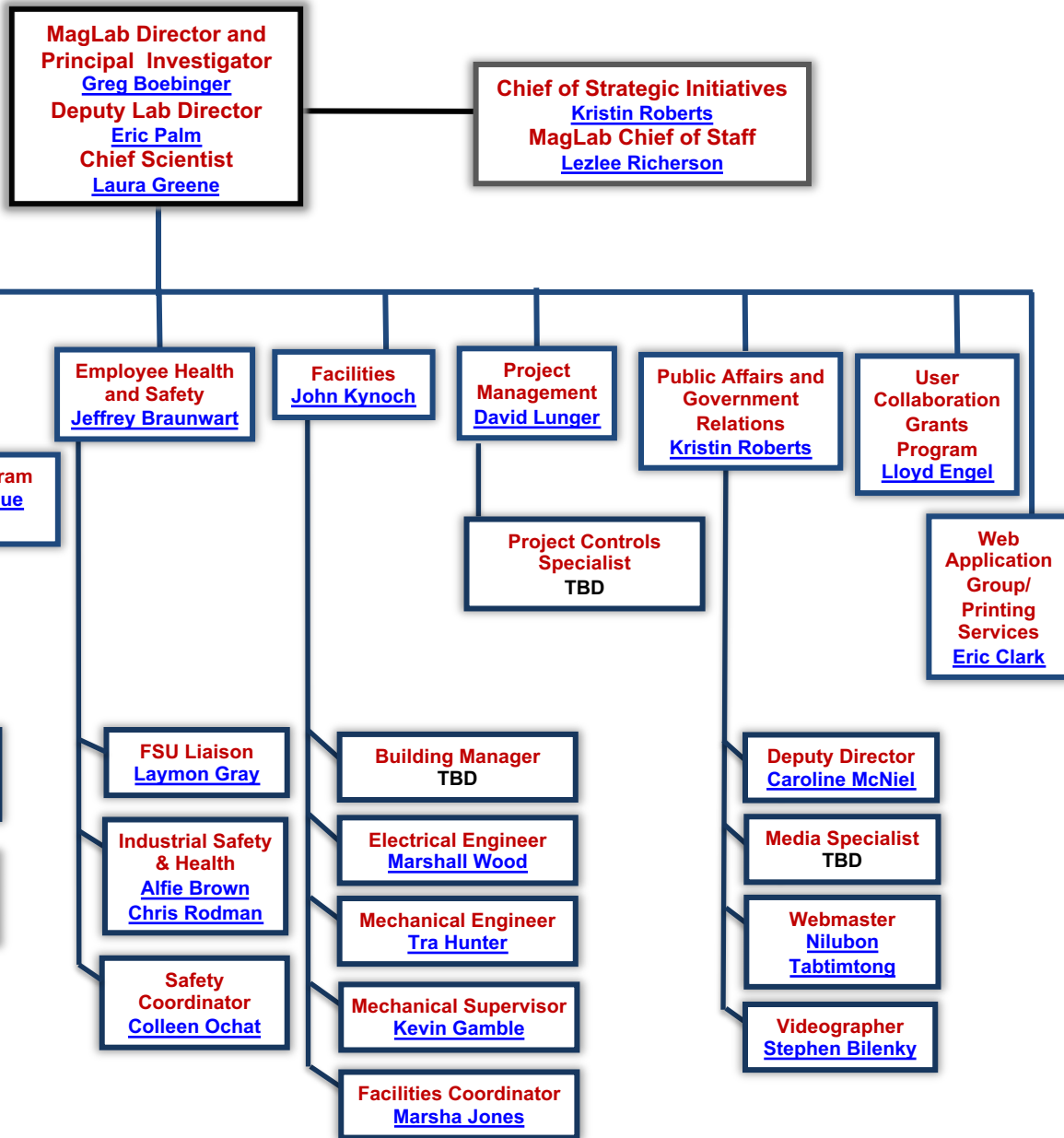
Biology Applications
[Lissa Anderson](#)

Environmental &
Petrochemical
Applications
[Ryan Rodgers](#)

MagLab Associate Lab Directors



MagLab Office of the Director



MagLab Advisory Committees

INSTITUTIONAL OVERSIGHT COMMITTEE
Richard McCullough, President, FSU, Chair
Kent Fuchs, President, UF
Thom Mason, Director, LANL

Institutional Representatives
Stacey Patterson, FSU VP for Research
David Norton, UF VP for Research
Raeanna Sharp-Geiger, Representing Associate Lab Director, Physical Science at LANL

EXTERNAL ADVISORY COMMITTEE
Stuart Brown, Chair
Nick Butch, Chair Users Cmte., *ex officio*

Jonathan Bagger	Ian Fisher	Peter Littlewood
Christoph Boehme	Robert Griffin Kristina	Carol Nilsson
Luca Bottura*	Hakansson	Jeff Parrell
R. David Britt	Chris Hammel	Marek Pruski
Joel Brock	Songi Han*	Art Ramirez
Wei Chen	Yining Huang	Bruce Strauss*
George Crabtree	Christopher	Alan Tennant
Cory Dean	Jaroniec	Nai-Chang Yeh
Roger Falcone	Barbara Jones	* Vice Chairs

USERS COMMITTEE
Nick Butch, Chair
Brad Ramshaw, Vice Chair, General Field
Franklin Leach, Vice Chair, Resonance

User Subcommittees
DC Magnet and High B/T Users Sub-Cmte
Pulsed Magnet Users Sub-Cmte
NMR/MRIs Users Sub-Cmte
Ion Cyclotron Resonance Users Sub-Cmte
Electron Magnetic Resonance Users Sub-Cmte

Lucio Frydman, Chief Scientist for Chem/Bio
David Larbalestier, Chief Materials Scientist
Alan Marshall, Chief Scientist for ICR

SCIENCE COUNCIL, Chaired by Laura Greene

DIVERSITY COMMITTEE
Bi-Monthly Meeting: Chair, Representatives from MagLab Departments

SAFETY COMMITTEE
Monthly Meeting: MagLab EH&S Director (Chair), EH&S Staff, Director, Representatives from MagLab Departments

MagLab Director and Principal Investigator
Greg Boebinger

Deputy Lab Director
Eric Palm

Chief Scientist
Laura Greene

EXECUTIVE COMMITTEE
Lab Director, Chair
Monthly Meeting of Director, Deputy, Associate Lab Directors, User Facility Directors, Chief Scientists, MagLab Chief of Staff, User Program Chief of Staff, Directors of Budget/Admin, CIRL, Diversity, EH and S, HR, PM, Public Affairs, UCGP, FAIR Data

User Program Chief of Staff
Anke Toth

Chief of Strategic Initiatives
Kristin Roberts
MagLab Chief of Staff
Lezlee Richerson

MAGLAB USER PROGRAM

ASSOCIATE LAB DIRECTORS

OFFICE OF THE DIRECTOR

GREEN = External Advisory Committees

GOLD = Internal Advisory Committees